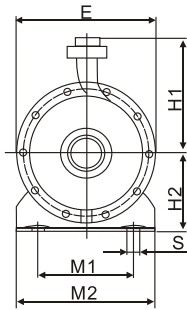
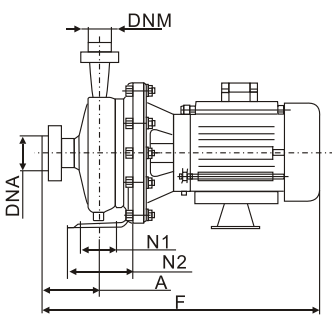


GZA(L)

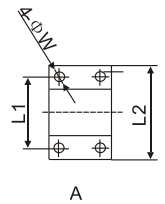
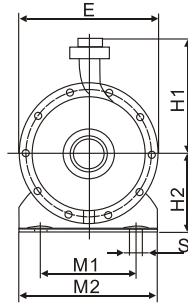
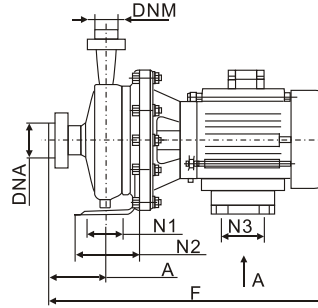
SERIES CENTRIFUGAL PUMPS



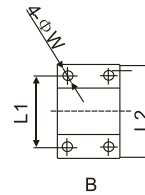
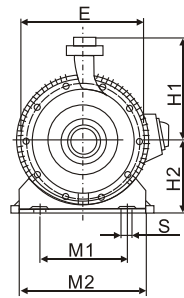
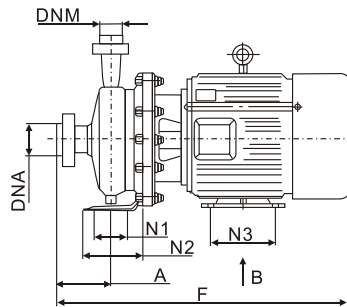
1TYPE 2.2~4.0KW



2TYPE 5.5~9.2KW



3TYPE 11.0~15.0KW



DIMENSIONS

Model	F	A	N1	N2	DNA	DNM	E	H1	H2	S	M1	M2	L1	L2	W
GZA(L)50-32-125/2.2	380	80	70	116.5	50	32	245	175	157.5	14	190	240	/	/	/
GZA(L)50-32-160/2.2	380	80	70	116.5	50	32	245	175	157.5	14	190	240	/	/	/
GZA(L)50-32-160/3.0	409	80	70	116.5	50	32	245	175	157.5	14	190	240	/	/	/
GZA(L)50-32-200/4.0	409	80	85	142	50	32	297	195	190	15	210	240	/	/	/
GZA(L)50-32-200/5.5	465	80	85	142	50	32	297	195	190	15	210	240	216	248	14
GZA(L)65-50-125/2.2	380	80	70	116.5	65	50	245	175	157.5	14	190	240	/	/	/
GZA(L)65-50-125/3.0	409	80	70	116.5	65	50	245	175	157.5	14	190	240	/	/	/
GZA(L)65-50-160/4.0	408	80	70	116.5	65	50	245	175	157.5	14	190	240	/	/	/
GZA(L)65-50-160/5.5	464	100	70	116.5	65	50	245	175	157.5	14	190	240	216	248	14
GZA(L)65-40-200/7.5	466	100	85	142	65	40	297	195	189.5	15	210	240	216	248	14
GZA(L)65-40-200/9.2	504	100	85	142	65	40	297	195	189.5	15	210	240	216	248	14
GZA(L)80-65-125/4.0	412	100	70	116.5	80	65	245	195	189.5	14	190	240	/	/	/
GZA(L)80-65-125/5.5	468	100	70	116.5	80	65	245	195	189.5	14	190	240	216	248	14
GZA(L)80-65-160/7.5	468	100	70	116.5	80	65	245	195	189.5	14	190	240	216	248	14
GZA(L)80-65-160/9.2	506	100	70	116.5	80	65	245	195	189.5	14	190	240	216	248	14
GZA(L)80-50-200/11	564	100	85	142	80	50	297	217	190	15	210	240	254	330	15
GZA(L)80-50-200/15	564	100	85	142	80	50	297	217	190	15	210	240	254	330	15